

ATEX signal tower



The explosion-proof LED signal tower EX ST is the ideal solution for condition and status displays as well as signaling faults and level indicators in demanding industrial environments. Designed for use in hazardous areas of Zones 1, 2, 21 and 22. The LED signal tower is used in various industries, including petrochemicals, refineries, shipbuilding, wastewater industry, sewage treatment plants and EX manufacturing plants. Wherever a reliable condition and status display is needed, our signaling solution offers optimal performance and safety.



IP Schutzart IP66
IP protection IP66

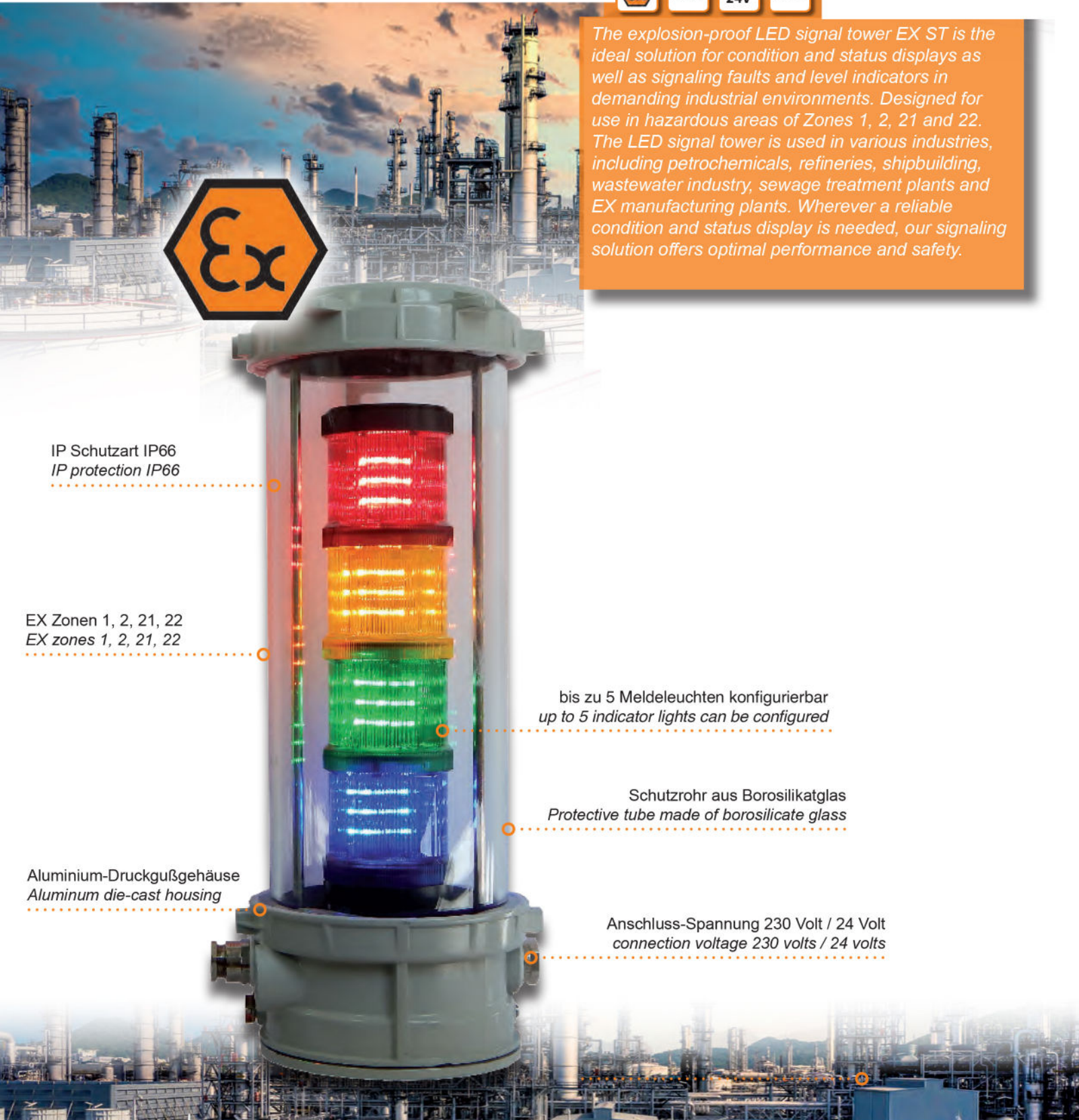
EX Zonen 1, 2, 21, 22
EX zones 1, 2, 21, 22

bis zu 5 Meldeleuchten konfigurierbar
up to 5 indicator lights can be configured

Schutzrohr aus Borosilikatglas
Protective tube made of borosilicate glass

Aluminium-Druckgußgehäuse
Aluminum die-cast housing

Anschluss-Spannung 230 Volt / 24 Volt
connection voltage 230 volts / 24 volts



LED signal tower ex-proof



TECHNISCHE DATEN | TECHNICAL DATA

Leuchtmittel <i>Illuminant</i>	Meldeleuchten mit je 12x LEDs <i>Indicator lights w. 12x LEDs each</i>
Farben Meldeleuchten <i>Color indicator lights</i>	rot, grün, gelb, orange, blau, weiss <i>red, green, yellow, orange, blue, white</i>
Schutzrohr <i>Protective tube</i>	Borosilikatglas
Gehäuse <i>Housing</i>	Aluminium-Druckguß <i>Aluminum die-casting</i>
Spannung <i>Current</i>	230V / 24V
Umgebungstemperatur <i>Ambient temperature</i>	-40°C - +50°C
IP Schutzart <i>IP protection class</i>	IP66
Schlagfestigkeit <i>Impact resistance</i>	7 Joule
Gewicht <i>Weight</i>	ca. 5,5 - 6,0 kg
Abmessungen <i>Dimensions</i>	430 (470) x 171 x 210 mm

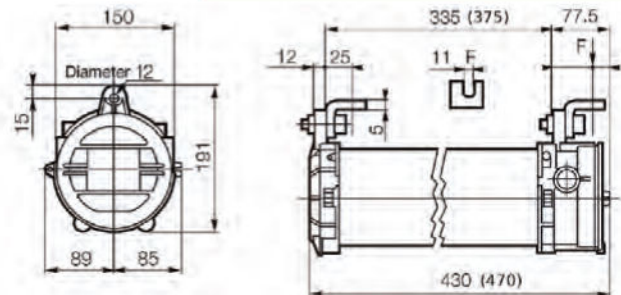
The signal columns are supplied as standard with 1x blind plug M20 and 1x cable gland M20 Ex-d 6.5-14mm. On request, the signal column can also be fitted with cable bushings for an additional charge. To do this, we need the desired cable length and type when ordering (standard is Ölflex 5G0.75 or 7G0.75).



EXPLOSIONSSCHUTZ | EXPLOSION PROTECTION

EX Schutzart <i>EX protection class</i>	II 2 G EX db IIC T6/T5 II 2D EX tb IIIC T120°C Db
Gefahrenzonen <i>Hazardous area</i>	Zone 1 / 2 / 21 / 22
Prüfzertifikat <i>Test certificate</i>	EPS 16 ATEX 1099

DIMENSIONS



EINSATZBEREICH | AREAS OF APPLICATION



Raffinerien
Refineries



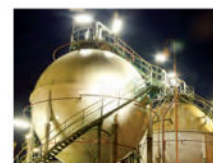
Schiffswerften
Shipyard



Petroindustrie
Petrochemical industry



Kläranlagen
Sewage treatment



Tankanlagen
Tank systems



Offshore
Offshore